

S.C. AEROMOTORS S.A.
Condorilor Street, No. 9, Bacau, 5500, Romania
E-mail aeromotors@xnet.ro Tel / Fax: 40. 34. 175909

BULLETIN No. 109/19.06.2001

(5 pages)

Instruction for Tachometer Adapter Installation

June 2001

1. Remove the front spark plug at the cylinder No. 4. Determine Top Dead Center on the compression stroke. This is easily done by holding your finger on the spark plug hole and pulling the engine through while feeling for the compression stroke. Determine top dead center by carefully inserting a small probe in the spark plug hole and moving the propeller each direction until the top of the stroke is felt with the probe.
2. Tape a small bent piece of wire on the front of gearbox near the gradations on the propeller shaft. Turn the propeller counterclockwise (backwards) 30 to 35 degrees. Then turn the propeller clockwise past the Top dead Center mark to the mark showing 8 degrees after Top Dead Center.
3. Remove the plug and aluminum washer from top of air distributor. Remove the inlet air line to the air distributor. Remove the nuts and aluminum gaskets of nine air lines that go to the cylinders. Remove the air lines and the lower gaskets.
4. Install the locking device on top of air distributor and lock the slide valve of air distributor as shown in figure No.1.
5. Remove three nuts and their safeties. Remove the cover of air distributor and the plate. Remove the plate, coupling, bearing step, spring and O-ring gasket. Observe the position of slide valve. It must be as shown in figure No.1. Make a small mark with a SOFT felt tip pen to aid in re aligning the assembly later.
6. Remove the locking device and slide valve.
7. Cut a slot in the slide valve as shown in figure No.2.
8. Wash and dry the slide valve without disturbing the alignment mark. Lightly grease the slide valve with aviation grease and install it in the cover of air distributor in initial position, as shown in figure No. 1. The hole for cylinder No. 4 must be uncovered by 1 millimeter in the direction of the slide-valve rotation. Install the locking device on top of air distributor and lock the slide valve of air distributor as shown in figure No.1.
9. Lightly grease the O-ring and install it on the plate.
10. Install on the slide valve the bearing step, the coupling and the spring.
11. Lightly oil the plate and the coupling.
12. If the gasket on the air distributor body is damaged replace it.
13. Install the plate on the cover of air distributor. Be careful of the O-ring gasket.
14. Install the assembly on the air distributor body. Install three new safeties and the nuts (torque 53 lbf-in). Safety the nuts as shown in figure No.3
15. Remove the locking device.
16. Install the air lines with washers and nuts (torque 71 lbf-in) in the following sequence 3,5,2,4,9,6,8,1,7. The numbers of cylinders are inscribed on the cover of air distributor.
17. Install the aluminum washer and the tachometer adapter (torque 133 lbf-in) and safety with safety wire. Install the inlet air line.
18. Remove the timing indicator and install the front spark plug.

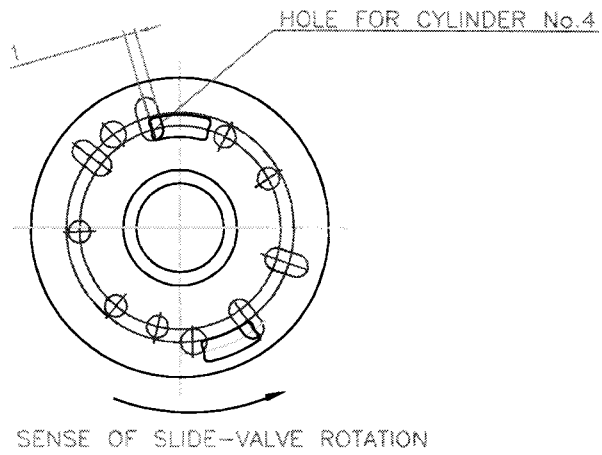
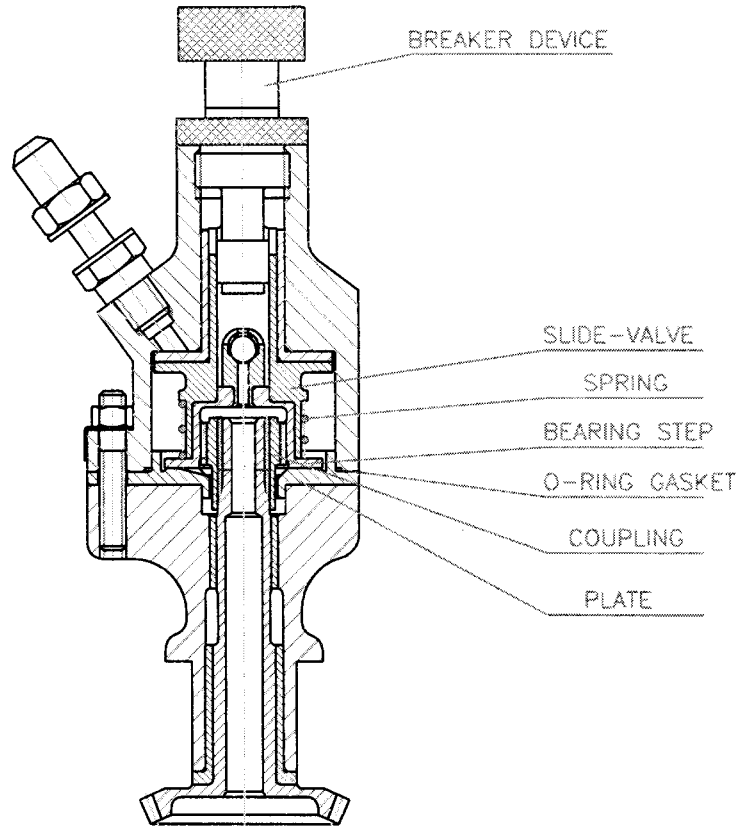
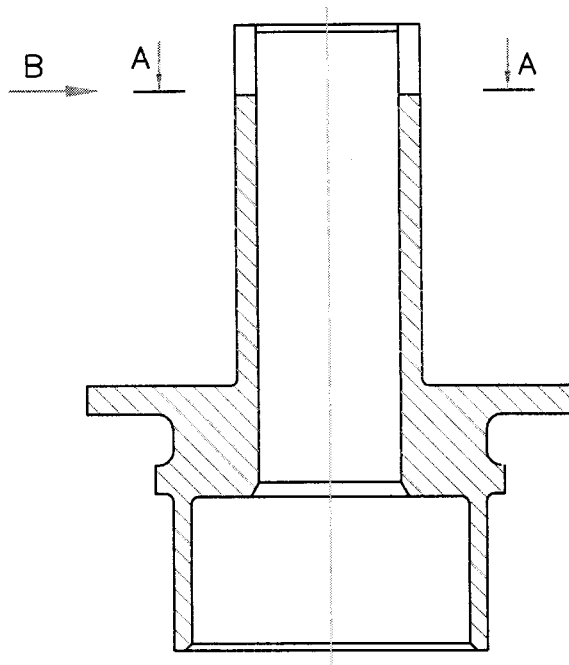


FIGURE No.1



SECTION A-A
SCALE 5:1

B VIEW
SCALE 5:1

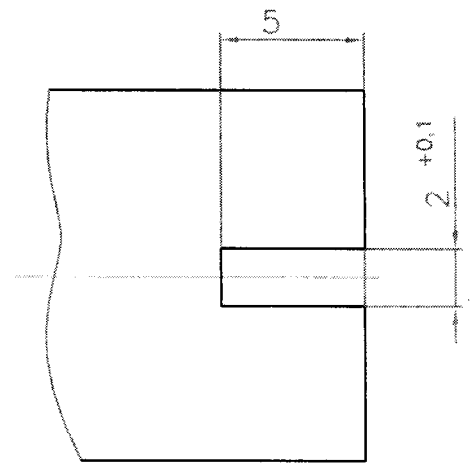
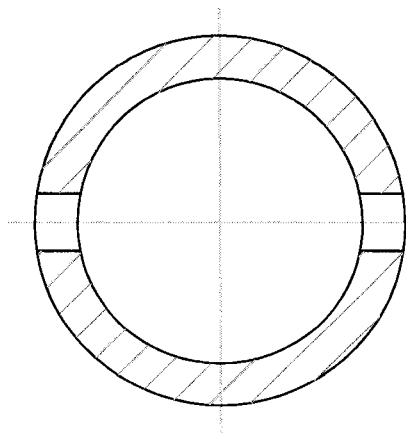


FIGURE No.2

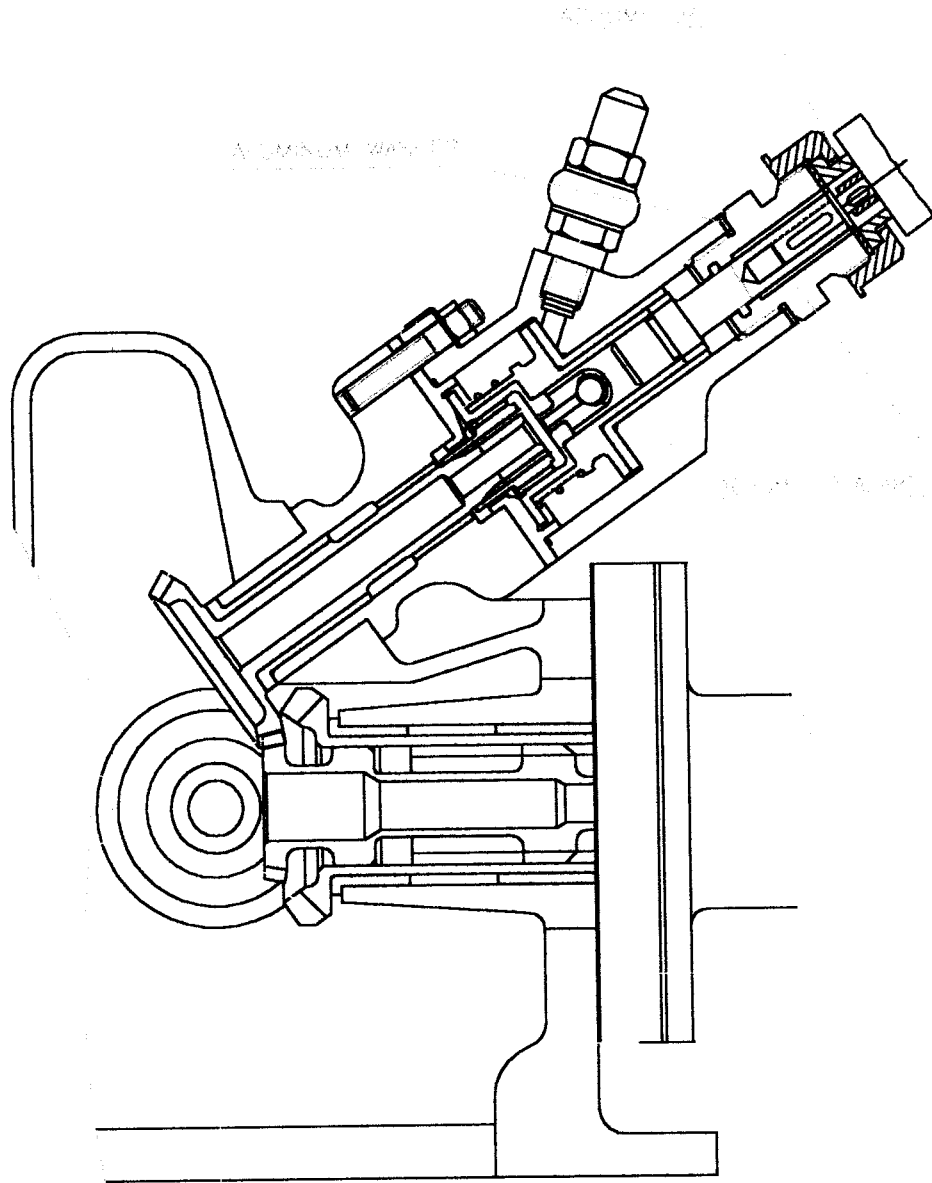
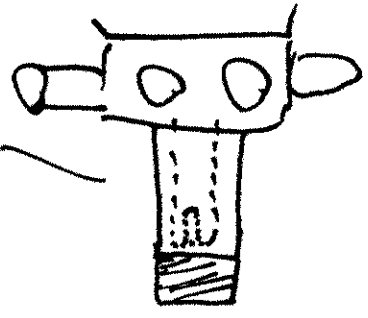


Fig. 109



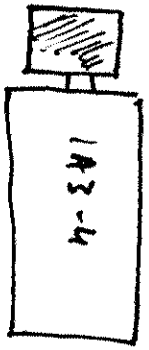
Pre-start distributor
(on engine)



Tach Adapter



Tach



1A3-4